

colour & design®

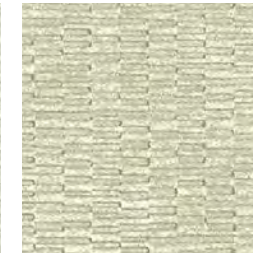
PRADO™



CD2-PDO-01 Winter White



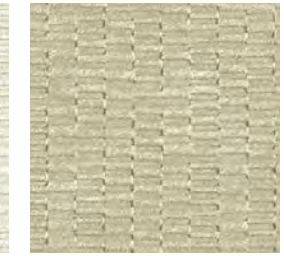
CD2-PDO-02 Cultured Pearl



CD2-PDO-03 Sheer Bliss



CD2-PDO-04 Modest White



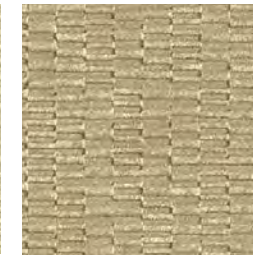
CD2-PDO-05 Caribbean Sand



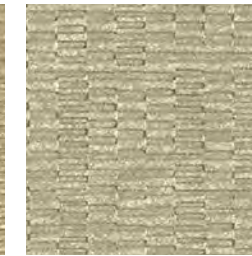
CD2-PDO-06 Luminous



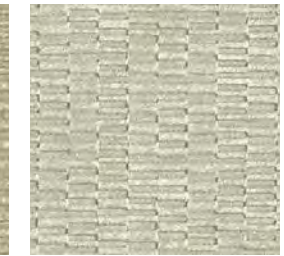
CD2-PDO-07 Tuscany



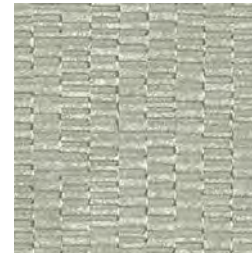
CD2-PDO-08 Gobi Desert



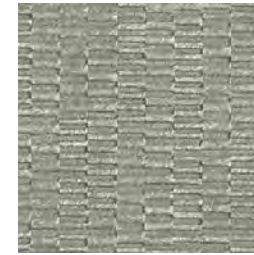
CD2-PDO-09 Feldpsar



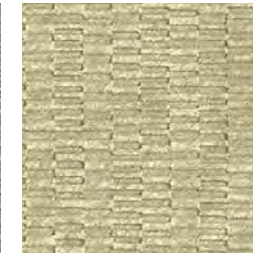
CD2-PDO-10 Capiz Shell



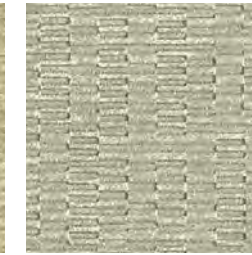
CD2-PDO-11 Grey Goose



CD2-PDO-12 Malted



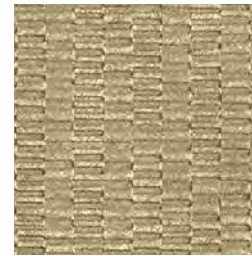
CD2-PDO-13 Dupioni Beige



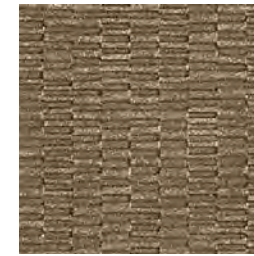
CD2-PDO-14 Sea Stone



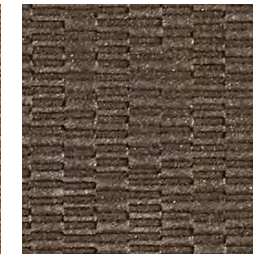
CD2-PDO-15 Relic



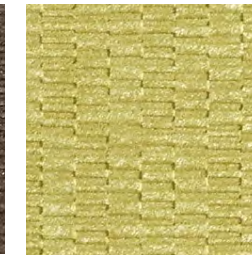
CD2-PDO-16 Good As Gold



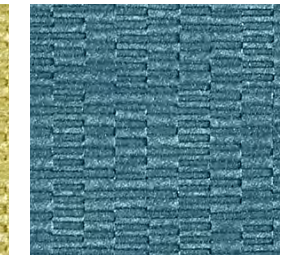
CD2-PDO-17 Abaca



CD2-PDO-18 Mink



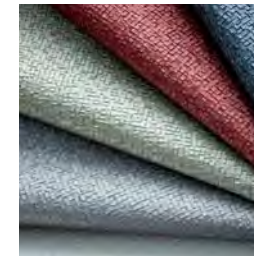
CD2-PDO-19 Citrine



CD2-PDO-20 Blue Wave



CD2-PDO-21 Last Tango



FOR SIMILAR TEXTURES
CLICK HERE

Type II 20 oz | Width: 52"/54" | Backing: Non-Woven | Match: Random Match Reversible Pattern
Repeat: 27"H x 24"V | Fire Rating: Class A | Flame Spread: 15 | Smoke Development: 20

[CLICK COLOURS](#)

[CLICK SAMPLES](#)

[CLICK SPECS](#)

[CONTACT US](#)

DESIGN RESOURCE
midwest

Copyright 2013. Colour & Design, Inc.
Any copying or other use is expressly prohibited.
Made in the U.S.A.