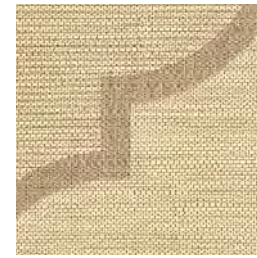
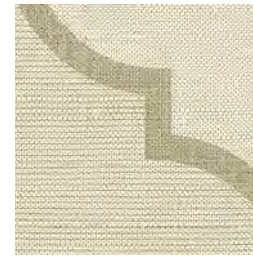


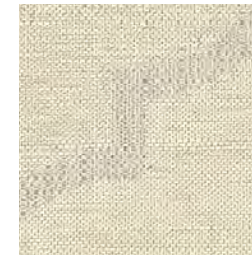
colour & design® **OBANA OGEE™**



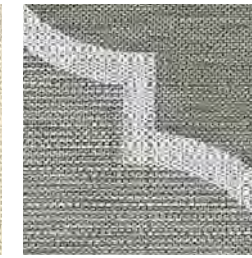
CD2-OGE-60 Wicker



CD2-OGE-11 Pale Taupe



CD2-OGE-12 Sandstone



CD2-OGE-17 Slate



CD2-OGE-36 Cream



CD2-OGE-37 Aura



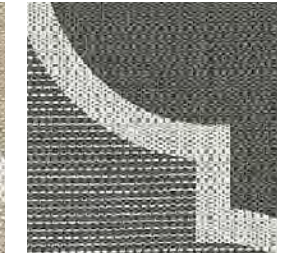
CD2-OGE-38 Mercury Glass



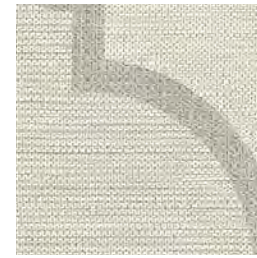
CD2-OGE-39 Silver Stone



CD2-OGE-40 Pewter



CD2-OGE-45 Black Mica



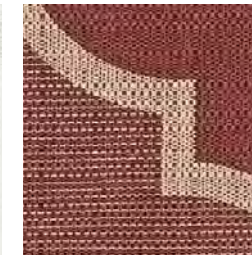
CD2-OGE-50 Natural Instincts



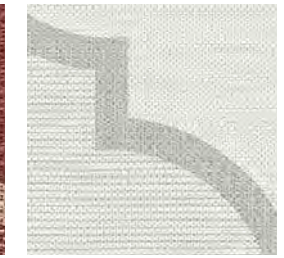
CD2-OGE-51 New Trail



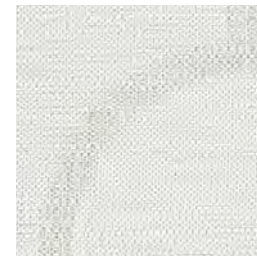
CD2-OGE-52 White Hot



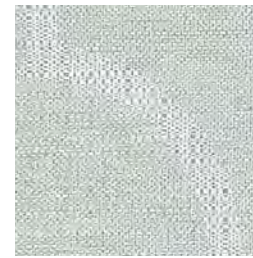
CD2-OGE-53 Pinot Noir



CD2-OGE-54 Paragon



CD2-OGE-55 Mistique



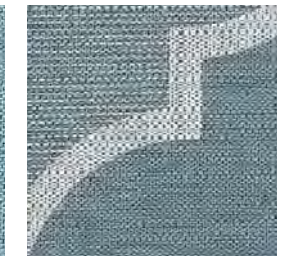
CD2-OGE-56 Gradient Tint



CD2-OGE-57 Halcyon



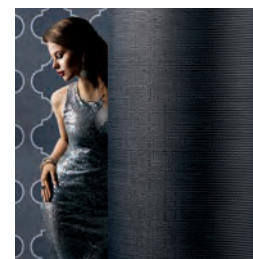
CD2-OGE-58 Seas the Day



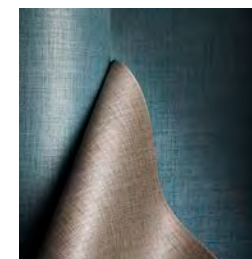
CD2-OGE-59 Sharkskin



FOR OBANA COORDINATE [CLICK HERE](#)



FOR OBANA GLINT COORDINATE [CLICK HERE](#)



FOR SIMILAR TEXTURES [CLICK HERE](#)

Type II 20 oz | Width: 52"/54" | Backing: Osnaburg | Match: Reversible Straight Across Match  
Repeat 27"H x 24"V | Fire Rating: Class A | Flame Spread: 20 | Smoke Development: 45

[CLICK COLOURS](#)

[CLICK SAMPLES](#)

[CLICK SPECS](#)

[CONTACT US](#)