



DN2-JEM-01 High Beam



DN2-JEM-02 Sugar Coat



DN2-JEM-03 New Taupia



DN2-JEM-04 Mirror Mirror



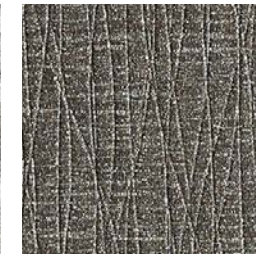
DN2-JEM-05 Silver Threads



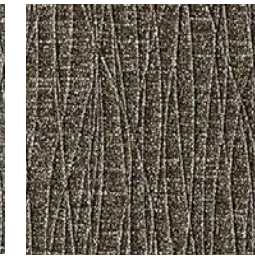
DN2-JEM-06 Mica Stone



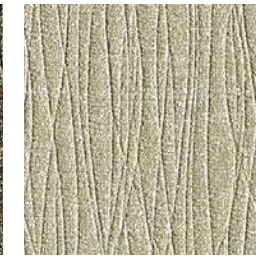
DN2-JEM-07 Frost



DN2-JEM-08 Black Opal



DN2-JEM-09 Pyrite



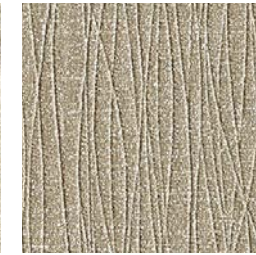
DN2-JEM-10 Candlebark



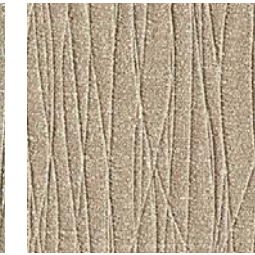
DN2-JEM-11 Shimmer



DN2-JEM-12 Taj Mahal



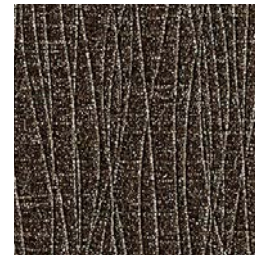
DN2-JEM-13 Sandcastle



DN2-JEM-14 Soleil Gold



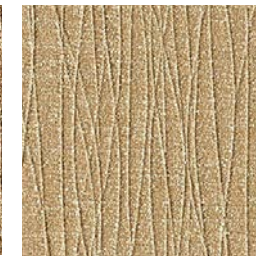
DN2-JEM-15 Cornsilk



DN2-JEM-16 Indulgence



DN2-JEM-17anela



DN2-JEM-18 Radiant



FOR SIMILAR TEXTURES  
CLICK HERE

Type II 20 oz | Width: 52"/54" | Backing: Osnaburg | Match: Random Match Reversible Pattern  
Repeat 27"H x 24"V | Fire Rating: Class A | Flame Spread: 25 | Smoke Development: 45

[CLICK COLOURS](#)

[CLICK SAMPLES](#)

[CLICK SPECS](#)

[CONTACT US](#)