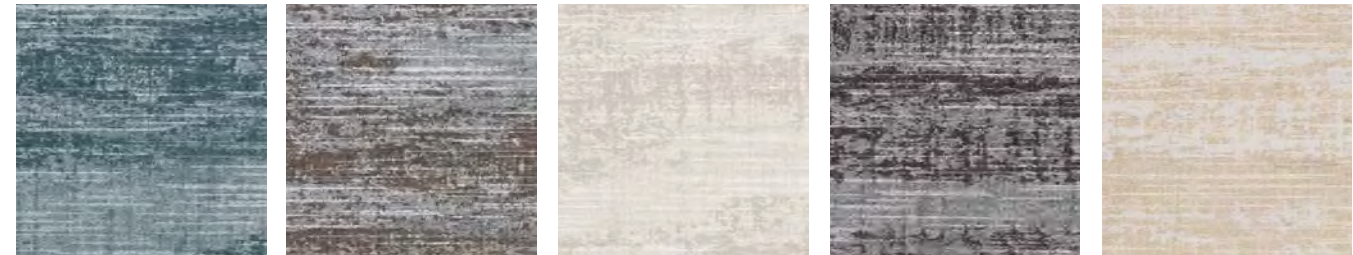


colour & design® GHOST CONCRETE™



CD2-GHO-01 Cirrus Cloud CD2-GHO-02 Cement Mix CD2-GHO-03 Lichen You CD2-GHO-04 Sustainable CD2-GHO-05 Oar



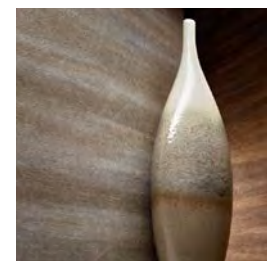
CD2-GHO-06 Ionian Sea CD2-GHO-07 Arctic Char CD2-GHO-08 Varnished White CD2-GHO-09 Nocitlucent CD2-GHO-10 Indigenous



CD2-GHO-11 Wild Ginger CD2-GHO-12 Split Rail CD2-GHO-13 Tobacco Barn CD2-GHO-14 Calico Rock CD2-GHO-15 Cedar Bridge



CD2-GHO-16 Carbon Star



FOR SIMILAR DESIGNS
[CLICK HERE](#)

Type II 20 oz | Width: 52"/54" | Backing: Non-Woven | Match: Reversible Match Pattern
Repeat 54"H x 36"V | Fire Rating: Class A | Flame Spread: 15 | Smoke Development: 10

[CLICK COLOURS](#)

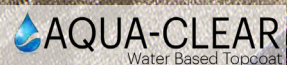
[CLICK SAMPLES](#)

[CLICK SPECS](#)

[CONTACT US](#)

DESIGN RESOURCE
midwest

Copyright 2019. Colour & Design, Inc.
Any copying or other use is expressly prohibited.
Made in the U.S.A.

AQUA-CLEAR
Water Based Topcoat