

# colour & design<sup>®</sup>

Recent releases and our favorites!





Sarina Silk





Bellalino





## Urban Forest





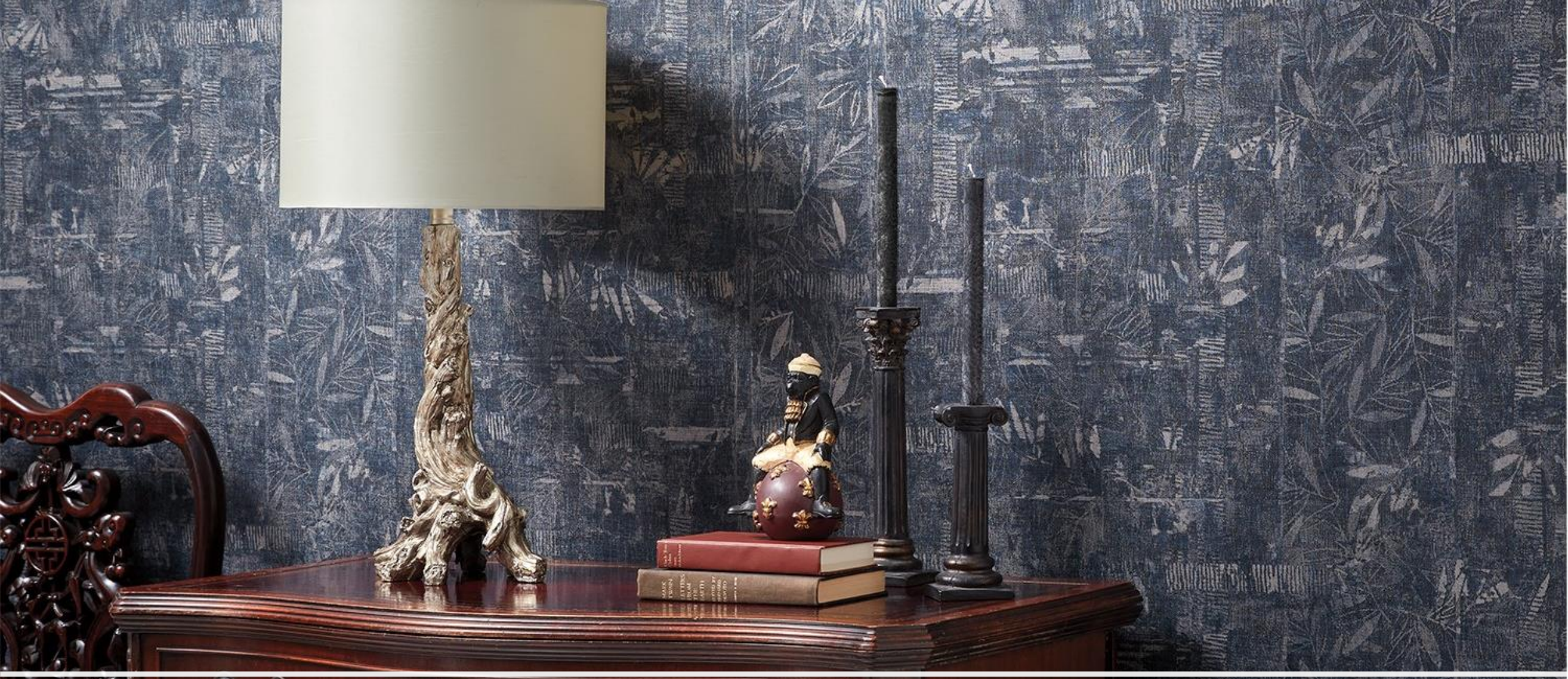
Woodlands Edge





Lario





Anique







Eniko







Loblolly





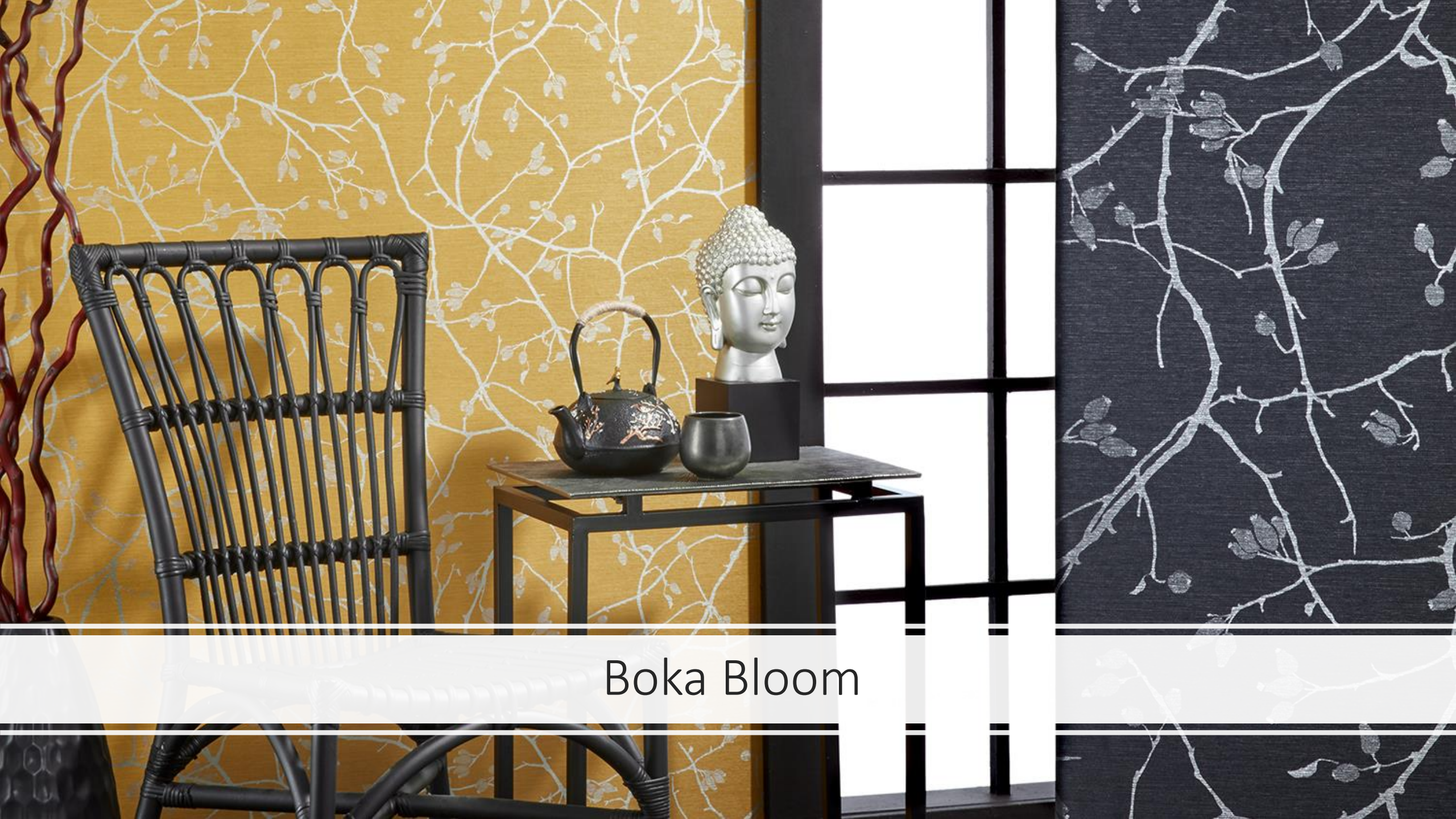
Canton Crepe Silk  
Matte & Satin





Canton Rainsilk





Boka Bloom





Toru





Lattice Silk







Farrah Chevron &  
Farrah





Zaya





Ghost Concrete



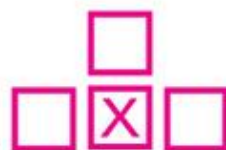
CDIGITAL  
IMAGING





## SCALABILITY

This design is a raster-based image. It is created to be as scalable as possible, but the image may begin to degrade when scaled beyond 12 feet in height.



## REPEAT

This design is not a repeating pattern. For significantly wide or tall installations, we will normally crop, stretch or mirror the design to fit your space.



## COLOUR

This design primarily features colours that are textured, layered,





CDIGITAL  
IMAGING

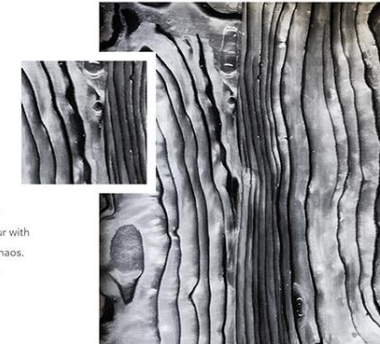


design | hotel charcoal

wall dimension:

12'h x 10'w

hue: charcoal



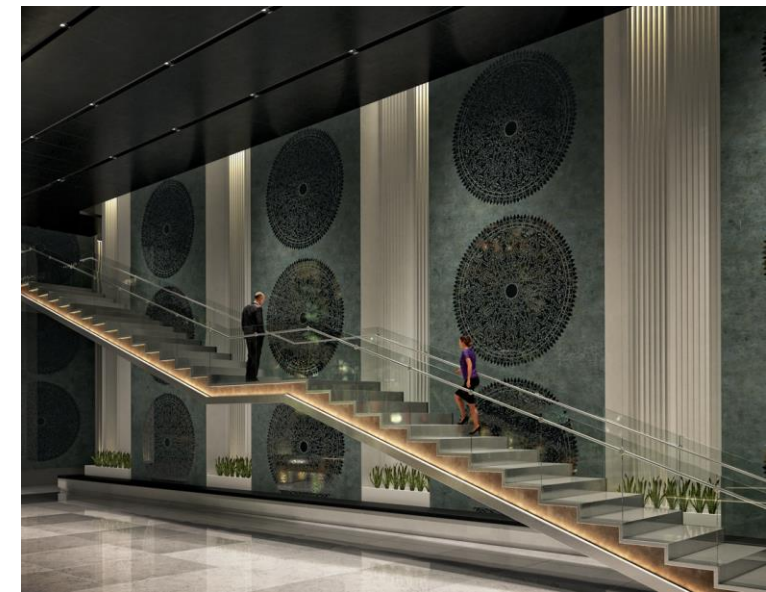
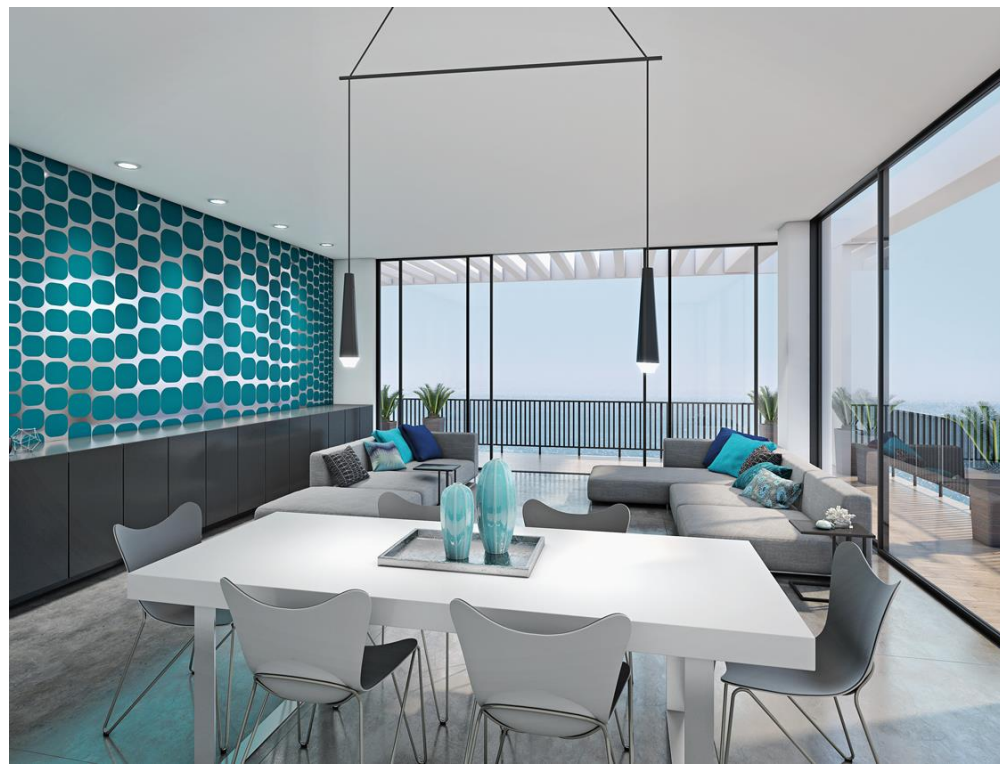
The digital era has spawned a whole  
vein of abstract design. Intense colour with  
mathematical plays off pattern and chaos.  
A reflective mylar substrate provides  
additional impact.

# Hotel Charcol

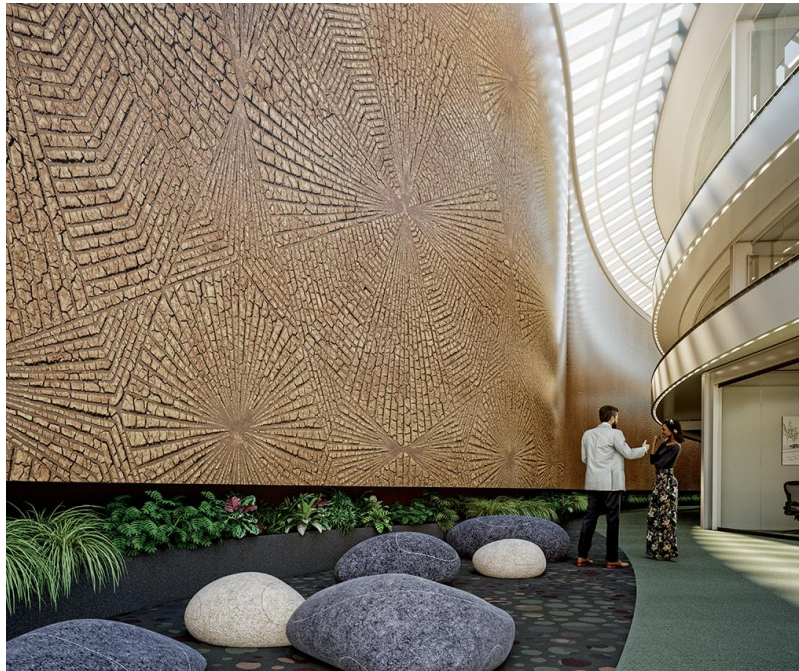
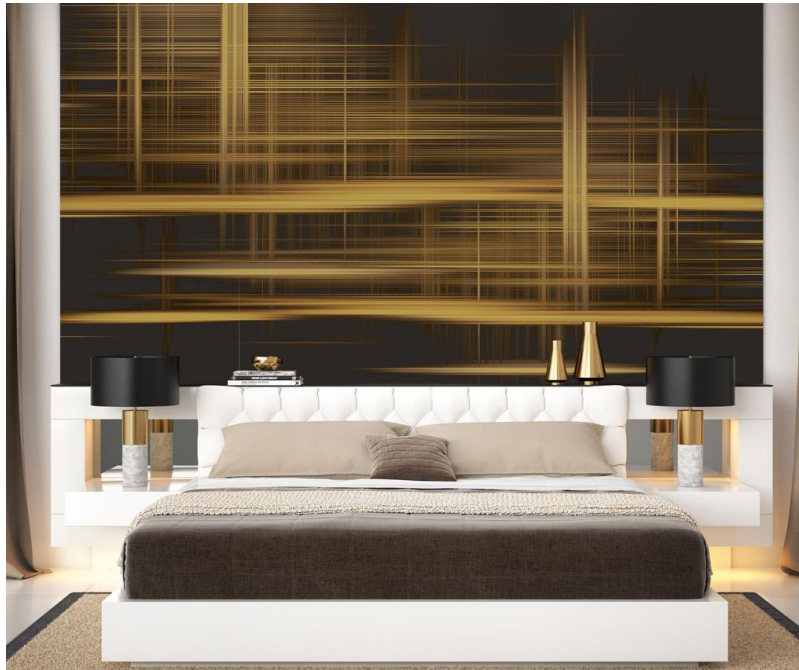








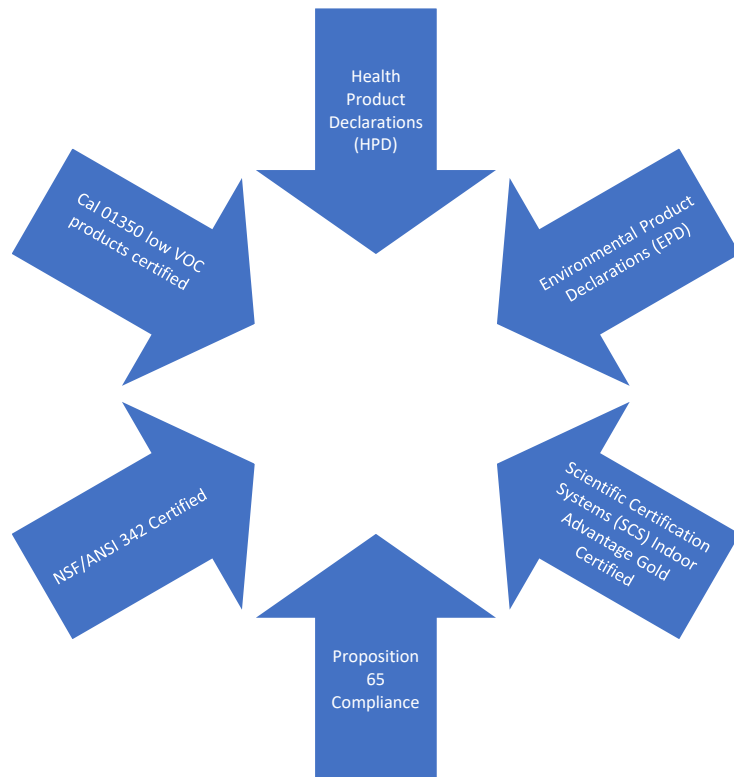






# Commitment to Sustainability

## Industry Initiatives



## Corporate Initiatives

- USGBC Gold Certified Corporate office/studio/warehouse
- 100% offset of energy use with use of green-e certified off-site renewable wind power since 2010
- 100% offset of carbon emissions since 2010
- Energy star rated since 2010
- Diverted 88% of waste from landfill in 2017
- 2017 Repurposed discontinued wallcovering: to trade school for training wallcovering installers



# Commitment to Sustainability


## Product Contributions

- USGBC LEED
- Can contribute to CI/NC LEED® EQ 4.1 Low Emitting Materials: Adhesives & Sealants.
- Can contribute to CI/NC LEED® EQ 4.2 Low Emitting Materials: Paints & Coatings.
- Can contribute to CI/NC LEED® MR 5.1 Regional Material: 20% manufactured regionally within 500 miles of jobsite.
- Pilot Credit LEED BD+C: Healthcare|v4 – LEED v – Certified Multi-attribute Products and Materials. The Pilot Credit was created to recognize and incentivize interiors products third-party certified to multi-attribute sustainability standards that demonstrate optimized environmental performance in several environmental impact categories. The pilot credit includes recognition of the NSF 342/ANSI

## Environmental Management System Annual Objectives

- Divert 50% of corporate office ongoing consumable waste from landfills
- Reduce 100% of environmental impact of energy use by converting to renewable wind energy
- Offset 100% of Green House Gas/carbon emissions for corporate office
- Offer consumers only Cal 01350 certified Low VOC products





# Aqua-Clear TopCoat 3.0

---

- Since 1998, Colour & Design has offered many wall covering designs with AQUA-CLEAR Topcoat. A proprietary formulation developed to seal and protect the surface of wall covering products utilizing a blend of urethane, acrylic, and vinyl polymers, AQUA-CLEAR is a water-based, Teflon-free top coat with exceptional resistance to abrasion and staining.
- The formula has been recently modified to reflect the growing demand for an ultra-low emitting, water-based protective top coat with the following enhanced characteristics:
  - Improved abrasion resistance
  - Scrubability with sanctioned commercial cleaners(including bleach when diluted in water)
  - Non-yellowing surface







Thank you

- [www.designresource-Midwest.com](http://www.designresource-Midwest.com)
- 612-374-9006
- [samples@designresource-Midwest.com](mailto:samples@designresource-Midwest.com)