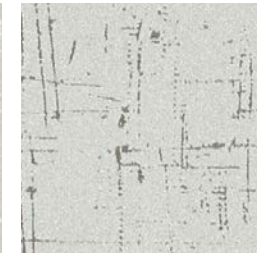




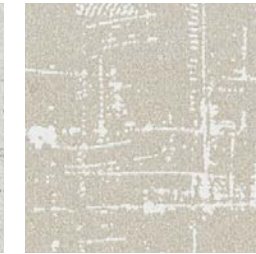
DN2-AZI-01

Origami



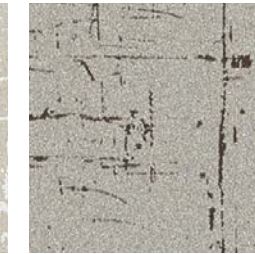
DN2-AZI-02

Paper Birch



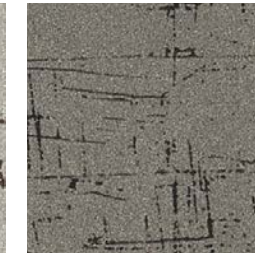
DN2-AZI-03

Warehouse



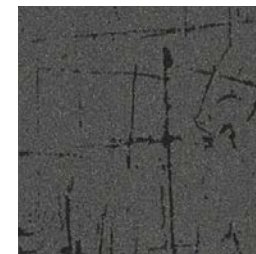
DN2-AZI-04

Tinsel



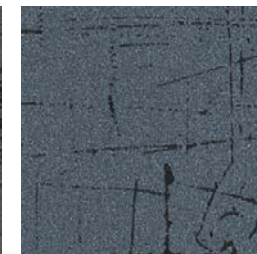
DN2-AZI-05

Lumi-Grey



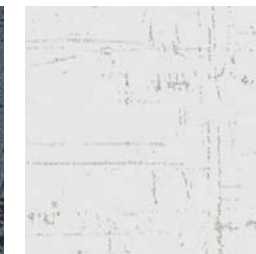
DN2-AZI-06

Oxidized Steel



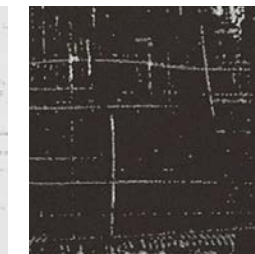
DN2-AZI-07

Storm Tracker



DN2-AZI-08

Ice Cap



DN2-AZI-09

Roof Top



DN2-AZI-10

Bora Bora



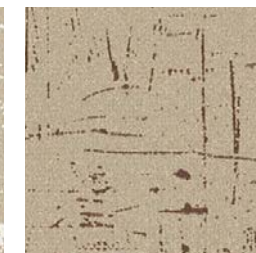
DN2-AZI-11

Bay Pearl



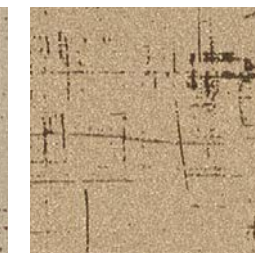
DN2-AZI-12

Tufa Stone



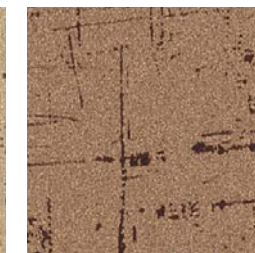
DN2-AZI-13

Beech Bark



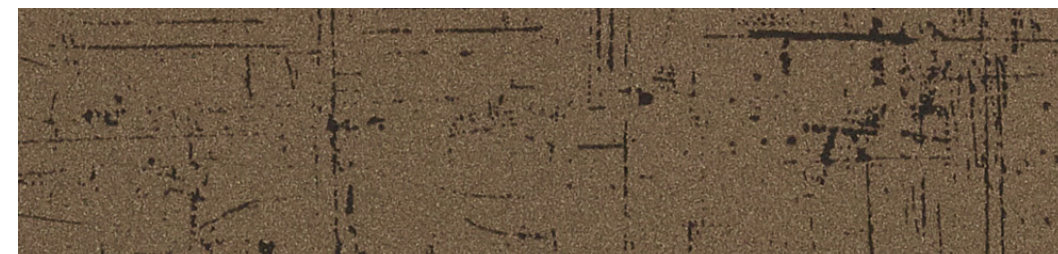
DN2-AZI-14

Archeology



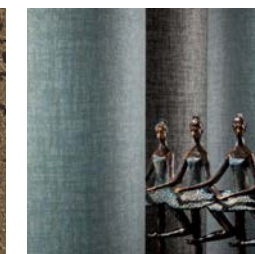
DN2-AZI-15

Gilded Cork



DN2-AZI-16

Raku Glaze



FOR SIMILAR TEXTURES
CLICK HERE

Type II 20 oz | Width: 52"/54" | Backing: Osnaburg | Match: Random Match Reversible Pattern
Repeat 54"H x 24"V | Fire Rating: Class A | Flame Spread: 15 | Smoke Development: 25

[CLICK COLOURS](#)

[CLICK SAMPLES](#)

[CLICK SPECS](#)

[CONTACT US](#)